

3U Eurorack Bracket Kit

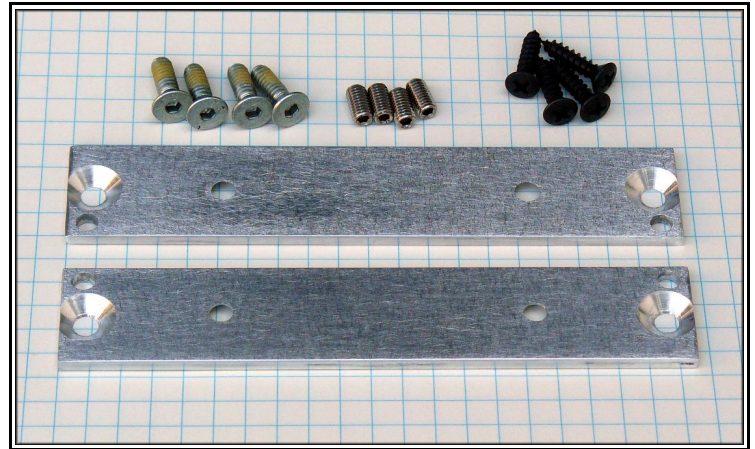
This kit is designed to for attaching Vector T-Strut rails to your custom Eurorack case.

Kit Includes:

- (2) - Aluminum 3U End Brackets
- (4) - End Bracket Securing Screws
- (4) - Alignment Set Screws
- (4) - Wood Screws for securing rack to case

Tools Needed:

- Philips Screwdriver
- 1/8" Hex Diver (Allen key)
- 3/32" Hex Diver



Step 1: Insert the (4) self-tapping alignment set screws into the backside slot of both ends of each rail using a 3/32" hex driver so that approximately 0.1" protrudes past the end of the vector rail.

Step 2: Place one end bracket over the alignment set screws and attach using the counter-sunk securing screws with a 1/8" hex driver. Do not tighten just bring up to snug.

Step 3: From the open end of the rails, insert the desired number of m2.5 square nuts into the slot on the opposite side as the alignment screws. We typically use 1 nut for every 2 HP.

Step 4: Attach the other end bracket using the same procedure in step 2.

Step 5: Check the alignment to make sure the rail assembly is square and tighten the securing screws. Do not over-tighten as you may strip the Vector rail.

